

COACH WORKS AUTO BODY  
STYLIN' & PROFILIN'  
30 EAST VINE AVE  
MESA, ARIZONA 85210-8534  
OFFICE: 480-890-2500 FAX: 480-890-2501

\*\*\* PRELIMINARY ESTIMATE \*\*\*

01/05/2018 12:35 PM

**Owner**

Owner: Melissa Armstrong  
Address: [REDACTED]  
City State Zip: [REDACTED]

Work/Day: [REDACTED]  
FAX: [REDACTED]

**Inspection**

Inspection Date: 01/05/2018 12:35 PM

Inspection Type:

Appraiser Name: MARINA RADMAN  
Address:

Appraiser License # :

Work/Day: (480)890-2500

City State Zip: [REDACTED]  
Email: [REDACTED]

Home/Evening: [REDACTED]  
FAX: [REDACTED]

**Repairer**

Repairer: COACH WORKS AB, INC.  
Address: 30 EAST VINE AVE  
City State Zip: MESA, AZ 85210-8534  
Email: [REDACTED]  
License # : [REDACTED]

Contact: matt  
Work/Day: (480)890-2500  
FAX: (480)890-2501

Target Complete Date/Time:

Regulation ID:

Days To Repair: 35

**Vehicle**

2013 Nissan Pathfinder SV 4 DR Wagon  
6cyl Gasoline 3.5  
Continuously Variable Tr

Lic Expire:  
Prod Date:  
Veh Insp# :  
Condition:  
Ext. Refinish: Two-Stage

VIN: [REDACTED]  
Mileage: 81,585  
Mileage Type: Actual  
Code: Z7144B  
Int. Refinish: Two-Stage

**Options**

1st Row LCD Monitor(s)  
AM/FM CD Player  
Anti-Lock Brakes  
Bodyside Cladding  
Compact Spare Tire  
Dual Airbags  
Head Airbags  
Keyless Access System  
Leather Shift Knob

2nd Row Head Airbags  
Alarm System  
Auto Headlamp Control  
Bucket Seats  
Cruise Control  
Electro-Hyd Steering  
Illuminated Visor Mirror  
Keyless Entry System  
Leather Steering Wheel

3rd Row Head Airbags  
Aluminum/Alloy Wheels  
Auxiliary Audio Input  
Center Console  
Dual Air Conditioning  
Halogen Headlights  
Intermittent Wipers  
Keyless Ignition System  
Lighted Entry System

Limited Slip Differential	MP3 Decoder	Overhead Console
Power Brakes	Power Door Locks	Power Drivers Seat
Power Mirrors	Power Windows	Privacy Glass
Pwr Accessory Outlet(s)	Rear Spoiler	Rear View Camera
Rear Window Defroster	Rear Window Wiper/Washer	Reverse Sensing System
Roof Rails	Side Airbags	Split Folding Rear Seat
Stability Cntrl Suspensn	Strg Wheel Radio Control	Tachometer
Theft Deterrent System	Third Seat (trucks)	Three Zone Climate Ctrl
Tilt & Telescopic Steer	Tire Pressure Monitor	Tow Hooks
Traction Control System	Trip Computer	USB Audio Input(s)
Velour/Cloth Seats	Wireless Phone Connect	XM Satellite Radio

**Damages**

Line	Op	Guide	MC	Description	MFR.Part No.	Price	ADJ%	B%	Hours	R
<b>Stripes And Mouldings</b>										
1	RI	1302		Mldg,Rear Door Lower LT	R & I Assembly				0.2	SM
<b>Front Body And Windshield</b>										
2	RI	103		Front Fender R & I LT	R & I Assembly				3.6	SM
3	EC	144		Sealant Kit,W/Shield	Replace Economy	\$100.00*			2.6	SM
<b>Roof</b>										
4	RI	359		Mldg,Roof Drip LT	R & I Assembly				0.9	SM
5	RI	1452		Rail,Luggage Rack LT	R & I Assembly				INC	SM
6	E	1460		Cap,Luggage Rack LT	738333KA0A	\$33.29				SM
7	E	1462		Cap,Luggage Rack LT	738733KA0A	\$21.44				SM
8	RI	350		Cable,Roof	R & I Assembly				4.1	SM
9	RI	1003		Roof Headliner R & I	R & I Assembly				INC	SM
<b>Dashboard And Components</b>										
10	RI	1362		Mldg,W/S Garnish LT	R & I Assembly				INC	SM
11	RI	1363		Mldg,W/S Garnish RT	R & I Assembly				INC	SM
<b>Center Console And Seat Tracks</b>										
12	RI	239		Cover,Seat Cushion	R & I Assembly				0.4	SM
13	RI	421		Cover,Seat Cushion LT	R & I Assembly				1.6	SM
<b>Front Doors</b>										
14	RI	207		Front Door R&I LT	R & I Assembly				1.1	SM
15	RI	273		Welt,Frt Door Body LT	R & I Assembly				0.5	SM
<b>Rear Doors</b>										
16	BR	287		Door Shell,Rear LT	Blend Refinish 0.9 Blend 0.5 Two-stage				1.4	RF
17	RI	303		W/Strip,Rear Door LT	R & I Assembly				0.5	SM
18	RI	385		Welt,Rr Door Body LT	R & I Assembly				0.5	SM
19	RI	334		Mldg,Rear Door Belt LT	R & I Assembly				0.2	SM
20	E	1458		Tape,Rear Door LT	828933JA0B	\$12.11			0.4	SM
21	RI	1077		Channel,Rear Glass Run LT	R & I Assembly				1.2	SM
22	RI	1160		Striker,Rear Lock LT	R & I Assembly				INC	SM
23	RI	1395		Supt,Rr Door Handle LT	R & I Assembly				0.2	SM
<b>Quarter And Rocker Panel</b>										
24	L	1355		Pillar,Hinge LT	Refinish 0.5 Surface 0.1 Two-stage				0.6	RF

25	L	178	13	Panel,Bodyside Front LT	Refinish 4.3 Surface 0.6 Two-stage setup 0.9 Two-stage		5.8	RF
26	I	1314	07	Panel,Bodyside Otr Upr LT >> section joint & weld burn repair	Repair		6.0*	SM
27	L	1314		Panel,Bodyside Otr Upr LT	Refinish 1.7 Surface 0.3 Two-stage		2.0	RF
28	I	187	07	Panel,Rocker LT >> section joint & weld burn repair	Repair		8.0*	SM
29	L	187		Panel,Rocker LT	Refinish		INC	RF
30	RI	193		Plate,Front Sill LT	R & I Assembly		0.2	SM
31	RI	195		Plate,Rear Sill LT	R & I Assembly		INC	SM
32	L	1454		Pillar,Center LT	Refinish 1.0 Surface 0.2 Two-stage		1.2	RF
33	L	389		Panel,Quarter LT	Refinish 2.3 Surface 1.5 Edge 0.8 Two-stage		4.6	RF
34	E	389		Pnl,Qtr (in Window Opn LT	781013KA1A	\$865.04	18.5	SM
35	E	397		Door,Fuel Filler LT	G88303KAMA	\$81.64	INC	SM
36	L	397		Door,Fuel Filler LT	Refinish 0.3 Surface 0.1 Two-stage		0.4	RF
37	E	448		Pocket,Fuel Filler LT	G81203KAMA	\$30.40	INC	SM
38	E	520		Seal,Fuel Filler Pocke LT	17240AN000	\$11.97	INC	SM
39	E	1205		Lock,Fuel Filler Door LT	78826EG01C	\$147.09	0.2	SM
40	EC	467		Sealant Kit,Qtr Glass LT	Replace Economy	\$85.00*	INC	SM
41	RI	444		Bracket,Quarter Panel LT	R & I Assembly		INC	SM
42	RI	413		Sensor,Quarter Panel LT	R & I Assembly		INC	SM
43	E	527		Pocket,Tllmp Opening LT	G81413KAAA	\$177.64	0.2	SM
44	L	527		Pocket,Tllmp Opening LT	Refinish 0.6 Surface 0.1 Two-stage		0.7	RF

**Inner Quarter & Panels**

45	E	197		Pnl,Center Plr Trim LT	769143JA1A	\$71.05	INC	SM
46	RI	1345		Pnl,Center Plr Trim LT	R & I Assembly		INC	SM
47	E	198		Pnl,Center Plr Trim RT	769133JA1A	\$71.05	0.4	SM
48	I	416	07	Pnl,Quarter Inner L/F High Strength Steel >> weld burn repair	Repair		2.0*	SM
49	L	416		Pnl,Quarter Inner L/F	Refinish 0.8 Surface 0.2 Two-stage		1.0	RF
50	E	411		Reinf,Tllmp Opening LT High Strength Steel	G76113KAMA	\$200.18	5.7	SM
51	L	411		Reinf,Tllmp Opening LT	Refinish 0.3 Surface 0.1 Two-stage		0.4	RF
52	E	393	07	Pnl,Wheelhouse Outer LT High Strength Steel	767113JA0A	\$781.76	INC	SM
53	L	393		Pnl,Wheelhouse Outer LT	Refinish 0.7 Surface 0.1 Two-stage		0.8	RF
54	E	391	07	Pnl,Wheelhouse Inner LT High Strength Steel	767519PF0A	\$185.56	9.3	SM
55	L	391		Pnl,Wheelhouse Inner LT	Refinish 0.7 Surface 0.1 Two-stage		0.8	RF
56	RI	419		Shield,Quarter Inner LT	R & I Assembly		INC	SM

57	RI	407	Pnl,Inner Qtr Trim LT	R & I Assembly			INC	SM
58	RI	408	Pnl,Inner Qtr Trim RT	R & I Assembly			INC	SM
59	E	453	01 Pnl,Qtr Trim UpR Rr LT	769373KA0A	\$67.04		INC	SM
60	E	454	01 Pnl,Qtr Trim UpR Rr RT	769363KA0A	\$67.04		INC	SM
61	RI	510	Fuel Tank R & I	R & I Assembly			2.0	SM
62	RI	514	Neck,Fuel Filler	R & I Assembly			INC	SM
63	E	517	Cap,Fuel Tank	172519BD0E	\$36.42			SM

**Tailgate**

64	BR	479	Shell,Tailgate	Blend Refinish 0.9 Blend 0.5 Two-stage			1.4	RF
65	RI	479	Tailgate R & I	R & I Assembly			INC	SM
66	RI	503	Mldg,Tailgate	R & I Assembly			0.2	SM
67	E	1102	N/Plate,Tailgate	908963KG0A	\$46.31		0.2	SM
68	E	1185	N/Plate,Tailgate	908953KA0A	\$47.98		0.2	SM
69	E	1017	Emblem,Tailgate	908903KA0A	\$47.98		0.2	SM
70	EC	1234	Sealant Kit,T/Gate Gls	Replace Economy	\$85.00*		1.3	SM
71	RI	550	Spoiler,Tailgate	R & I Assembly			0.9	SM

**Rear Bumper**

72	RI	565	Rr Bmpr Reinf R & I High Strength Steel	R & I Assembly			INC	SM
73	N	569	Rr Bumper Cvr Overhaul	Additional Labor			INC	SM
74	E	566	Cover,Rear Bumper	850223KA1H	\$434.87		1.0	SM
75	L	566	Cover,Rear Bumper	Refinish 2.4 Surface 0.5 Two-stage			2.9	RF
76	RI	567	Absorber,Rear Bumper	R & I Assembly			0.2	SM
77	E	581	Bkrt,Rear Bumper Mtg LT	852233KA0A	\$44.75		INC	SM

**Rear Body, Lamps And Floor Pan**

78	RI	1264	Compt,Interior	R & I Assembly			INC	SM
79	I	509	Panel,Rear Body >> section joint & weld burn repair	Repair			2.0*	SM
80	L	509	Panel,Rear Body	Refinish 1.3 Surface 0.3 Two-stage			1.6	RF
81	E	533	Taillamp Assembly,Otr LT	265553KA0A	\$246.07		INC	SM
82	E	534	Taillamp Assembly,Otr RT	265503KA0A	\$246.07		INC	SM
83	RI	535	Taillamp Assembly,Inr LT	R & I Assembly			0.2	SM
84	RI	536	Taillamp Assembly,Inr RT	R & I Assembly			0.2	SM

**Manual Entries**

85	SB		HAZARD. WSTE. REM.	Sublet Repair	\$8.50*			RF
86	N		COVER CAR EXTERIOR	Additional Labor	\$24.00*		0.5*	RF
87	N		COLOR TINT	Additional Labor			0.5*	RF
88	L		CORROSION PROTECTION	Refinish	\$18.00*		0.3*	RF
89	L		FLEX ADDITIVE	Refinish	\$18.00*			RF
90	N		RAW BUMPER PREP	Additional Labor	\$27.50*			RF
91	N		COVER VEHICLE INTERIOR	Additional Labor	\$20.00*		0.8*	SM
92	I		FRAME TIME	Repair			2.0*	FR
93	SB		WHEEL ALIGNMENT 4	Sublet Repair	\$89.99*		0.2*	ME
94	N		FRAME SET UP	Additional Labor	\$150.00*			FR
95	EC		Seam Sealer	Replace Economy	\$187.14*		3.0*	SM*
96	EC		Weld thru primer	Replace Economy	\$67.78*			SM*
97	EC		Cavity wax	Replace Economy	\$54.22*			SM*
98	N		Panel alignment / test fit	Additional Labor			4.0*	SM*
99	N		door window calibration	Additional Labor			0.5*	SM*
100	N		Vehicle scanning	Additional Labor			1.0*	ME*

100 Items

MC Message

01 CALL DEALER FOR EXACT PART # / PRICE  
 07 STRUCTURAL PART AS IDENTIFIED BY I-CAR  
 13 INCLUDES 0.6 HOURS FIRST PANEL TWO-STAGE ALLOWANCE

**Estimate Total & Entries**

<b>Gross Parts</b>					\$3,974.75	
<b>Other Parts</b>					\$836.64	
<b>Paint &amp; Materials</b>		26.9 Hours @	\$36.00		\$968.40	
<b>Parts &amp; Material Total</b>						\$5,779.79
<b>Tax on Parts &amp; Material</b>			@ 8.050%			\$465.27
<b>Labor</b>	<b>Rate</b>	<b>Replace Hrs</b>	<b>Repair Hrs</b>	<b>Total Hrs</b>		
<b>Sheet Metal (SM)</b>	\$56.00	62.1	23.3	85.4	\$4,782.40	
<b>Mech/Elec (ME)</b>	\$150.00		1.2	1.2	\$180.00	
<b>Frame (FR)</b>	\$65.00		2.0	2.0	\$130.00	
<b>Refinish (RF)</b>	\$56.00	25.9	1.0	26.9	\$1,506.40	
<b>Labor Total</b>				115.5 Hours		\$6,598.80
<b>Sublet Repairs</b>					\$98.49	
<b>Gross Total</b>						\$12,942.35
<b>Net Total</b>						\$12,942.35

Alternate Parts Y/00/00/00/00/00 CUM 00/00/00/00/00 Zip Code: 85210 Audatex Host  
 Rate Name Default

Audatex Estimating 8.0.414 ES 01/18/2018 02:29 PM REL 8.0.414 DT 12/01/2017  
 © 2018 Audatex North America, Inc.

**5.4 HRS WERE ADDED TO THIS ESTIMATE BASED ON AUDATEX'S TWO-STAGE REFINISH FORMULA.  
 ESTIMATE CALCULATED USING THE 2.5 HOUR MAXIMUM ALLOWANCE FOR TWO-STAGE REFINISH OF NON-FLEX, EXTERIOR SURFACES.**

**Op Codes**

- |                            |   |                                |
|----------------------------|---|--------------------------------|
| * = User-Entered Value     | ^ = Labor Matches System Assigned Rates | E = Replace OEM                |
| NG = Replace NAGS          | EC = Replace Economy                    | OE = Replace PXN OE Srpls      |
| UE = Replace OE Surplus    | ET = Partial Replace Labor              | EP = Replace PXN               |
| EU = Replace Recycled      | TE = Partial Replace Price              | PM = Replace PXN Reman/Reblt   |
| UM = Replace Reman/Rebuilt | L = Refinish                            | PC = Replace PXN Reconditioned |
| UC = Replace Reconditioned | TT = Two-Tone                           | SB = Sublet Repair             |
| N = Additional Labor       | BR = Blend Refinish                     | I = Repair                     |
| IT = Partial Repair        | CG = Chipguard                          | RI = R & I Assembly            |
| P = Check                  | AA = Appearance Allowance               | RP = Related Prior Damage      |

This report contains proprietary information of Audatex and may not be disclosed to any third party (other than the insured, claimant and others on a need to know basis in order to effectuate the claims process) without Audatex's prior written consent.



© 2018 Audatex North America, Inc.

AUDATEX is a trademark owned by Audatex North America, Inc. All rights reserved.



## Quarter Panel Replacement and Recycled

*Recycled panel replacement may or may not be recommended by the vehicle manufacturer.*



### Important Reminders:

- Reveal mouldings that are mounted flush to stationary glass (e.g., Windshield, Back Glass, or Quarter Glass) are at risk of breakage when being removed.
- Stationary glass that is urethane bonded is considered a structural part of the vehicle. Replacing stationary glass requires:
  - following specific replacement procedures
  - using specified installation materials
  - returning the vehicle to OEM structural integrity for occupant safety
- When selecting Glass Kit in conjunction with the quarter panel, remember that the labor is automatically included in the quarter panel. To ensure full labor value, do not "zero out" the glass kit labor.
- Due to extensive trim variations, the following operations are not included for vans:
  - bodyside trim R&I
  - middle/rear seat R&I

For non-assembled parts select "Replace" operation and zero out price to obtain R&I labor. For assembled parts select "Replace Recycled" operation to obtain R&I labor. For others, estimate on site.

New Part Replacement (OEM and non-OEM) Operations		Recycled Part Replacement Operations		Operations
Included Operations	Not Included Operations	Included Operations	Not Included Operations	
√		√		Rear bumper R&I (when required)
√		√		Rear bumper filler R&I (when required)
√		√		Back glass R&I
√		√		Tailgate R&I (when required)
√		√		Middle/Rear seat R&I (when required)

√		√		Quarter trims R&I
√		√		Quarter glass R&I (stationary or flip out)
√			√	Bolt-on extension R&I
√			√	Fuel door R&I (when required)
√			√	Mud guard R&I (when required)
√		√		Disconnect/connect convertible top assembly at quarter
√		√		Spoiler and flare R&I (OEM only)
√			√	Detach and weld at roof panel, rocker panel, lock pillar, inner quarter, rear body and floor pan (New Part Replacement)
√		√		Application of weld-through primer ( <b>Welded areas</b> )
√		√		Block sand ( <b>Welded areas</b> )
√		√		Application of guide coat ( <b>Welded areas</b> )
√		√		Dual action sand ( <b>Welded areas</b> )
√		√		Seat belt anchor R&I
√		√		Back glass adhesive kit (labor)
√		√		Reasonable adjustment and alignment (as defined by the manufacturer using conventional fasteners and/or hardware)
√		√		Rear body trim R&I (when required)
√		√		Rear lamps R&I (when required)
√		√		Sill plate R&I
√		√		Carpet / insulation rollback
√		√		Body weatherstrip pullback
√		√		Door striker R&I
√		√		Package tray trim R&I
√		√		Loosen headliner (when required)



Vinyl roof peel back	✓				✓
Rocker panel moulding R&I (when required)	✓				✓
Raise and support vehicle	✓				✓
Rear wheel R&I	✓				✓
Cover to protect interior during repair	✓				✓
Seam sealing	✓				✓
Body fill labor ( <b>Welded areas</b> )	✓				✓
Disconnect / connect battery	✓				✓
Disconnect / connect wiring harness for access	✓				✓
Fabrication of inserts (when required)	✓				✓
Airbag R&I (when required)	✓				✓
Airbag sensor R&I (when required)	✓				✓
Deck lid hinge R&I	✓				✓
Deck lid R&I (when required)	✓				✓
Deck lid hinge R&I (when required)	✓				✓
Deck lid or tailgate hydraulic rod R&I (when required)	✓				✓
Convertible top R&I (when applicable)	✓				✓
Rear compartment gutters	✓				✓
Body weatherstrip R&I	✓				✓
Roll down quarter glass R&I	✓				✓
Headliner R&I (Additional Labor)	✓				✓
Fuel tank R&I (Additional Labor)	✓				✓
Sunroof drain	✓				✓
Antenna assembly R&I	✓				✓
Wiring harness R&I	✓				✓
Corrosion protection	✓				✓

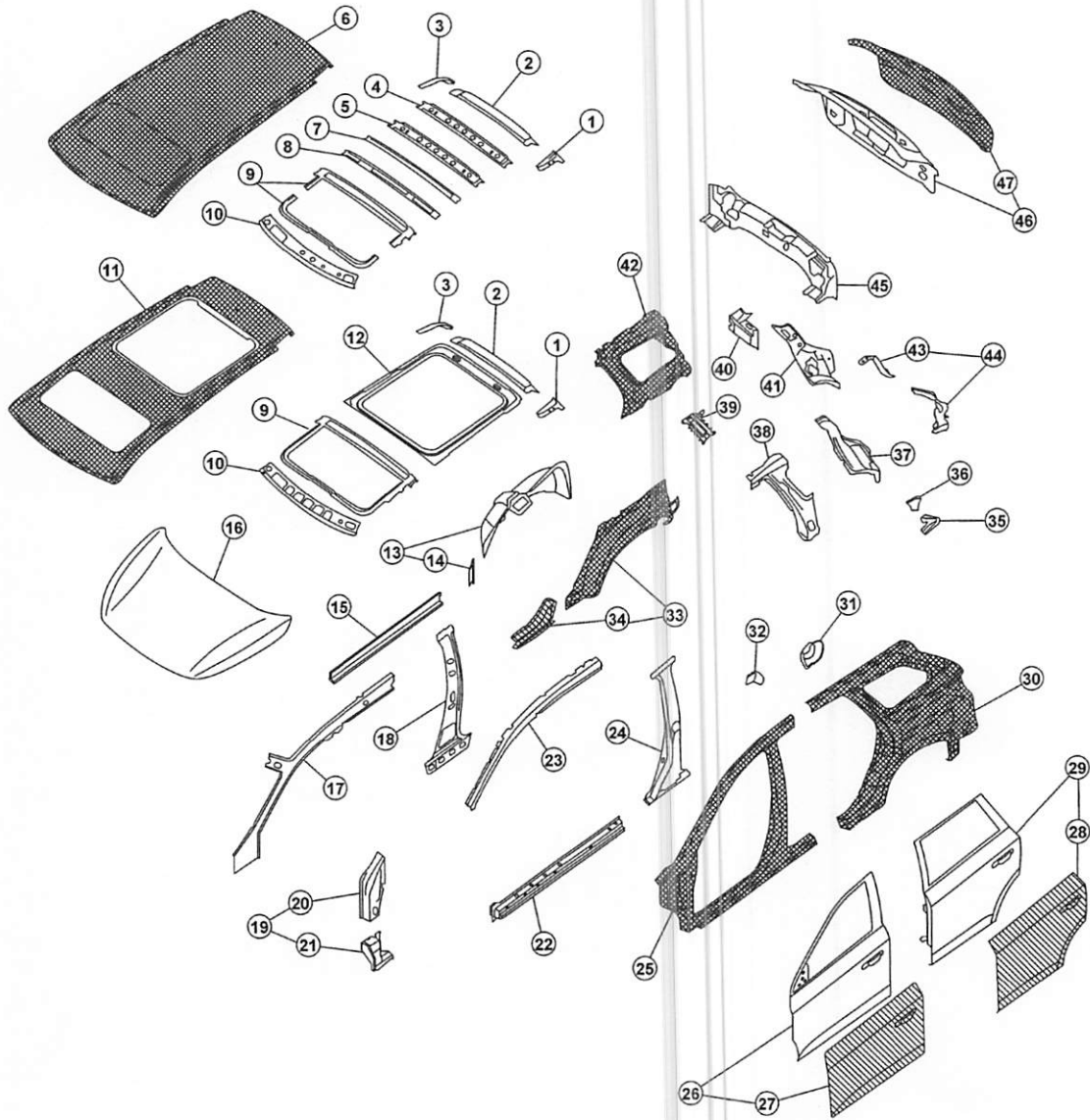
Body insulation (e.g., foams, pads)	√				√	
Trimming, repair, or modification of part	√				√	
R&I of moldings, emblems, nameplates and ornaments	√				√	
R&I of non-standard equipment not identified as options	√				√	
Inner quarter panel				√	√	
Detach and weld at rocker panel, rear body panel, passenger compartment floor, and in quarter window opening (includes attached inner sheet metal and wheel house) (Recycled Part Replacement)				√	√	
Disassembly, cleaning, & reassembly of assemblies	√				na	na




# BODY COMPONENT PARTS

< PREPARATION >

## Body Component Parts

INFOID:000000008506512



-  : Both sided anti-corrosive pre-coated steel portions
-  : High strength steel (HSS) portions
-  : Both sided anti-corrosive steel and HSS portions

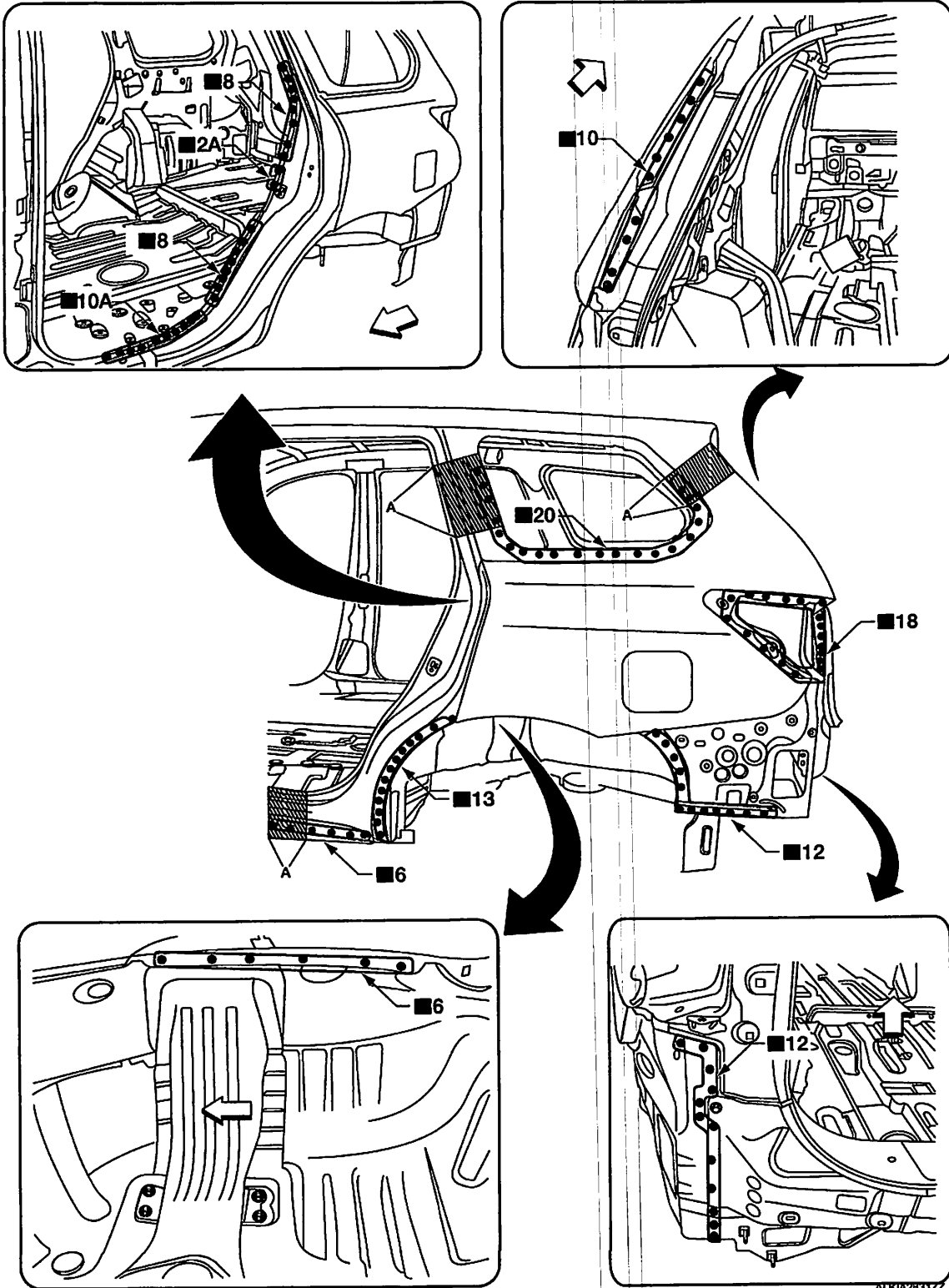
ALKIA2745ZZ

# REPLACEMENT OPERATIONS

< REMOVAL AND INSTALLATION >

## Rear Fender

INFOID:000000008508525



Replacement parts

- Rear fender

A. Recommended sectioning location

⇐ Front

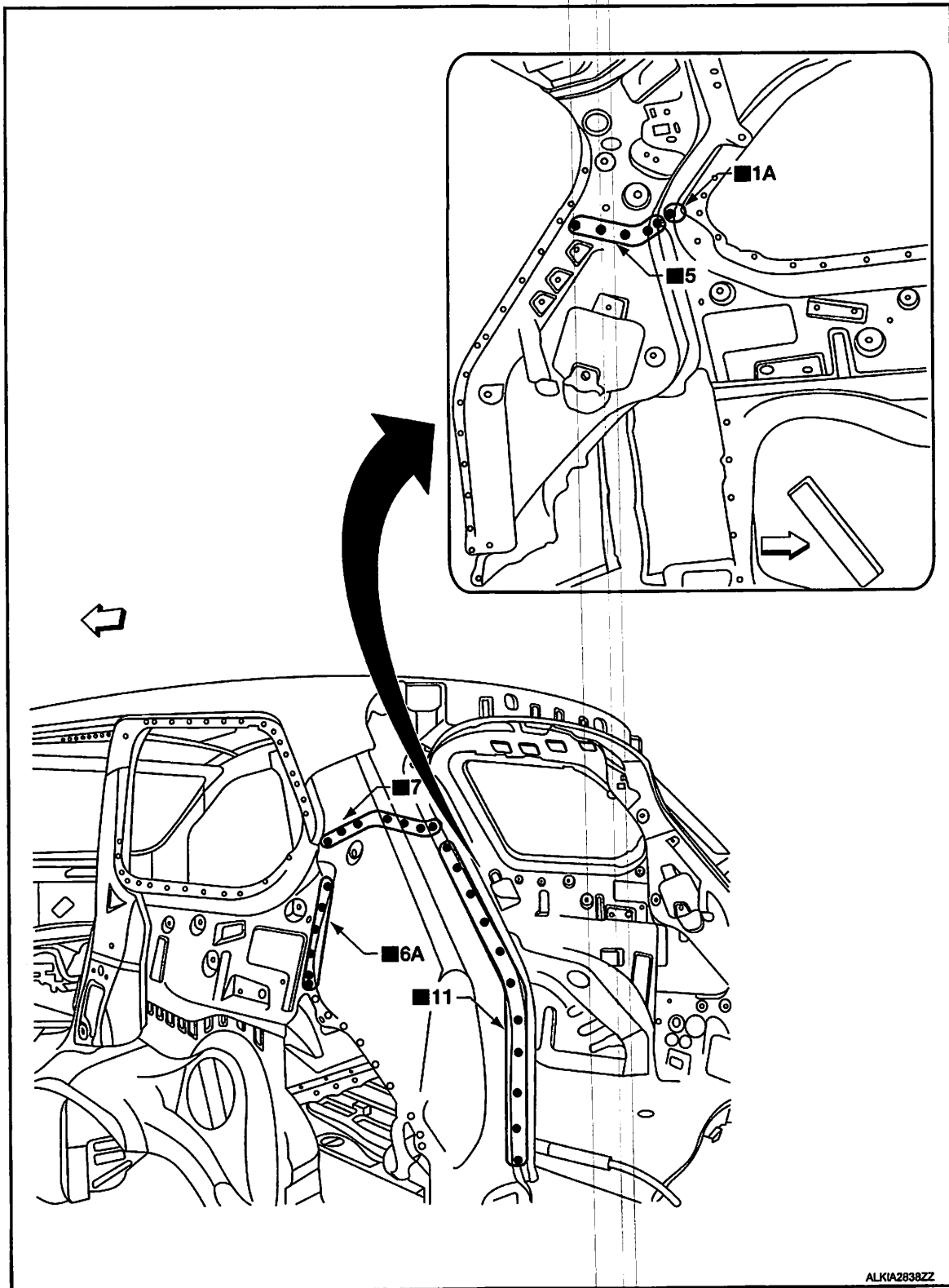
# REPLACEMENT OPERATIONS

< REMOVAL AND INSTALLATION >

## Rear Body Side Inner Assembly

INFOID:000000008506526

- Work after rear body side outer has been removed.



Replacement parts

- Rear pillar assembly

← Front

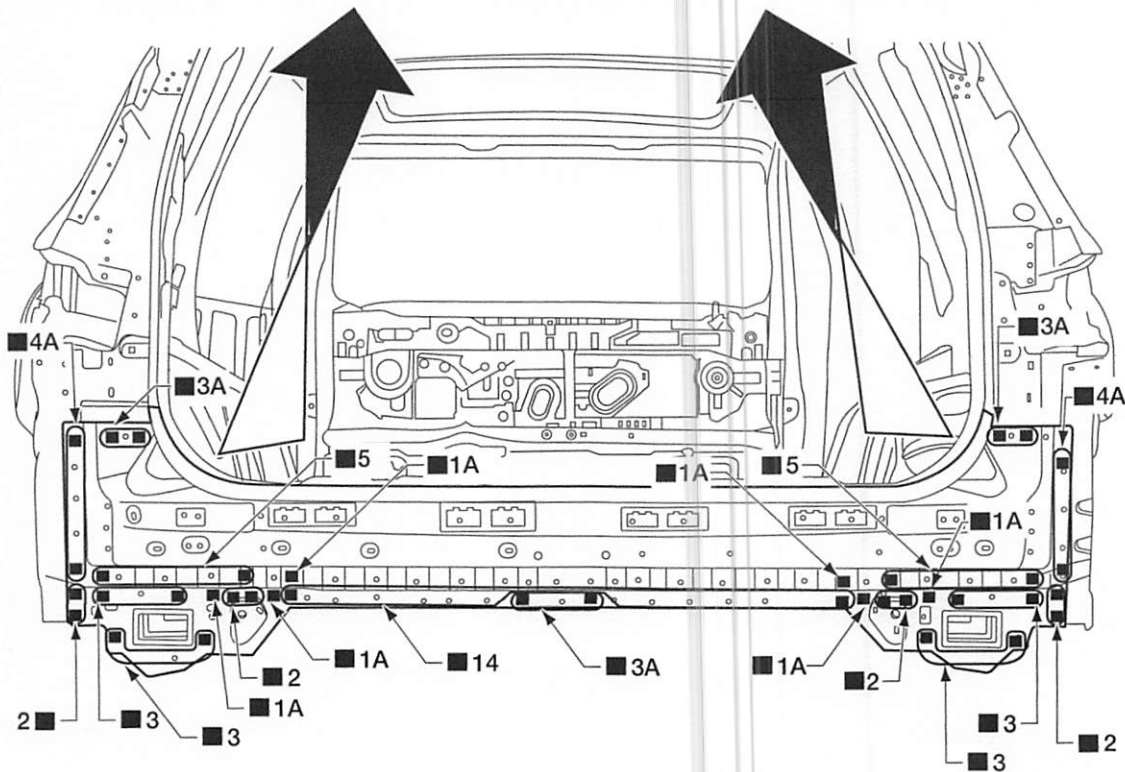
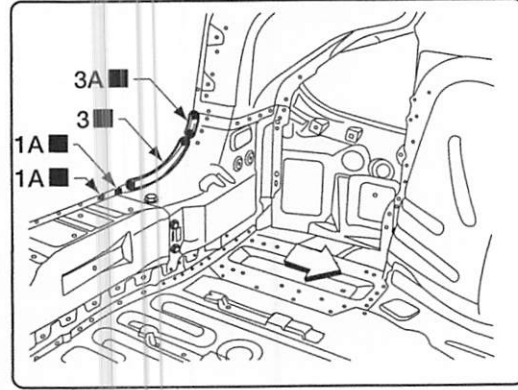
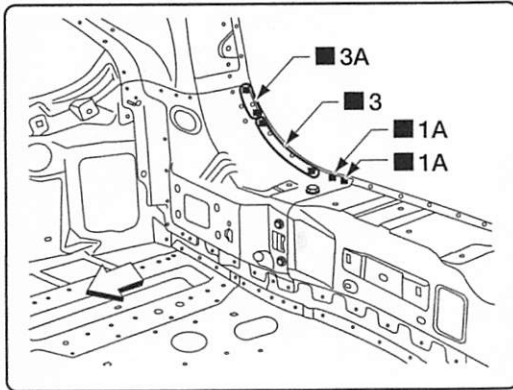
BRM

# REPLACEMENT OPERATIONS

< REMOVAL AND INSTALLATION >

## Rear Panel Assembly

INFOID:000000008506528



ALKIA2388ZZ

Replacement parts

- Rear panel assembly

← Front